

The Tollgate Farm News

VOLUME 30

ISSUE 3

MARCH 2024



MSU Tollgate Garden Volunteers General Meeting On Zoom

[Tollgate gardeners meet on Zoom in January, February, and March.]

**Thursday, March 21, 2024
7:00 PM**

Pests on the Horizon this Season

Join Tollgate gardeners on Zoom Thursday evening, March 21, to learn about **Pests on the Horizon this Season**. Consumer Horticulture Supervising Extension Educator **David Lowenstein, PhD**, will present using Enviroweather ([Homepage - MSU - Enviroweather](#)). His program will cover what the warmer winter might mean for pests and emerging pests to watch for in 2024.

Dr. Lowenstein is based out of Clinton Township in Macomb County. Before joining MSU, David worked managing invasive species and doing integrated pest management (IPM). He has a BA in Biology from City University of New York's Lehman College, an MS in Entomology from the University of Wisconsin, and a PhD in Ecology/Evolution from the University of Illinois-Chicago.

Dr. Lowenstein is a prolific writer and contributor with dozens of articles on a variety of garden topics at [David Lowenstein PhD \(msu.edu\)](#).

TOLLGATE GARDEN VOLUNTEER IMPORTANT DATES AND EVENTS 2024					
MAR	MEETINGS		APR	MEETINGS	
5	TGAC Meeting – Zoom	7:00 pm	2	TGAC Meeting – Zoom	7:00 pm
21	TGV General Meeting – Zoom	7:00 pm	18	TGV General Meeting	7:00 pm
MAR	WORKDAY ACTIVITIES		APR	WORKDAY ACTIVITIES	
2	Pruning	9:00 am	6	Rose Garden/Pond	9:00 am
9/10	MapleFest – no workday		13	Demo Garden	9:00 am
16	Grass Cut Back – all	9:00 am	20	Office/Heritage/Rain	9:00 am
23	Pathway/Demo Mulching	9:00 am	27	Children's/Xeriscape	9:00 am
30	Easter Weekend - Multi-garden work	9:00 am	27	New Volunteer Orientation Pancake Brunch	9:00 am Noon

The Tollgate Farm News

A Special Thanks!

To all of you who donated to help the Tollgate Gardeners make Tollgate a more beautiful place - your donation is greatly appreciated! The support you have provided will continue to help our program prosper and grow. Thanks again and Happy Gardening!

Mary Bohner
Garry Campbell
Mary Anne Chadwick
Pat Dalter
Sue Grifor

Harold Henderlong
Martha Larsh
Barbara Macek
Rich Macek

Sherry Mueller
Patti Nehr
Carol Oppenheim
Lisa Turkawski



Photo from MSU Extension website

The Tollgate Farm News

FROM THE TOLLGATE FARM MANAGER

GREETINGS

Roy Prentice



Greetings all,

Maple Syrup: We all know that March is maple syrup season, right? We tapped the Tollgate trees early in February this year, earlier than ever before. Although the weather at the time of tapping seemed conducive to flow, all that came from the trees was a mild dribble of sap. Eventually, the season began. Even at its peak, 2024 is shaping up to be a pale shade of former years. Usually, the season hits its stride during March and sometimes lasts long enough to put its big toe into April. This year I fear that the sap season may be over with us barely out of February! The warm weather this spring is great for anyone who dislikes winter's low temperatures, but it's doing nothing good for our syrup production. Evidently, if you have a project that depends on the weather you are subject to its vagaries.



Many thanks to Richard, Kurt, Gayle, Kenn, Annie, Adam, David, Bob, Candy, and the many other volunteers that make the season possible. The steam rising from the sugar house is a true sign of spring.

Many groups have visited the Tollgate sugar bush this season. Lots of field trips. Education director, Ellen Koehler, has been working hard to bring the wonder of Tollgate maple syrup production to youths and adults throughout Southeast Michigan.

Goat kids! In the last week, twelve new goat kids have been born on the farm. They are super cute. Tollgate livestock manager, Destiny Pearson, has arranged a program that allows for lots of interaction between the public and Tollgate's new arrivals. The public gets to feed and interact with the new kids three times per day. It is lots of fun for the people, the goat kids enjoy the contact, and the revenue generated helps support the care of all the animals on the farm. Everyone's happy.

There are many signs of spring around the farm. Bluebirds, sandhill cranes, a bald eagle, spring peepers, and even the lowly red-winged blackbird all tell that spring is here. Not wanting to be left behind, Tollgate's plants are definitely showing signs of life. The daffodils are emerging, buds are swelling, and volunteers are returning to the gardens. I appreciate the dedicated individuals who help make the gardens special.

I'll see you soon around the farm,
Roy

Photo provided by Kurt Westermann

The Tollgate Farm News



Notes from the President Renee Cottrell

Spring is coming! And so are the busy months for all our garden areas. Look for the reminders in your e-mail. Active members who are not available on our Saturday group activity day and looking for garden assignments to do independently, should contact me or Roy for information throughout this season. The activity calendar is posted on the web site and at the back of this newsletter if you want to plan in advance. The initial 2024 workday for pruning went well and after Mapleafest weekend we will resume our early season activities as the weather permits!

We would love to expand our membership and active gardeners. The Tollgate Garden Volunteers welcome any interested gardener; you need not be a Master Gardener to join. If you have friends, neighbors or relatives that are interested in gardening consider inviting them as a guest to observe a Saturday work day. This would allow them a chance to tour the gardens, observe the activities of a typical work day and speak with other volunteers on what is involved in being a Tollgate Garden Volunteer. We can then guide them through the MSU Volunteer Selection Process if they wish to join! See the Membership article for renewal information.

Ongoing activities –

- Our special project to fabricate new and updated plant identification tags is in the final stages for finishing and assembly that can be an added activity on Saturday work days or arranged on other days upon request.
- The Nursery is preparing for plant divisions,
- PAR team is working with starts in the greenhouse and planning for other gardens continues.

“Behold, my friends, the spring is come; the earth has gladly received the embraces of the sun, and we shall soon see the results of their love!”

~ Sitting Bull-Hunkpapa Lakota leader 1831-1890

Reminders:

AGL's/Garden Teams - Consider sending in your garden plans/budgets this month if you have special work items this season that may need Roy and his equipment to accomplish or need to get approval for mail order purchases. The next approval meeting is at the April 2nd TGAC meeting. The sooner we know the sooner we can confirm approval and schedule requested work.

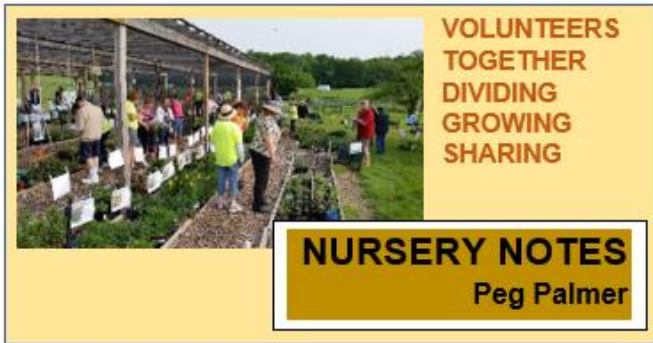
As always, I invite Active member interested in joining a dedicated team for one of the many garden experiences here at Tollgate to contact me for further information. I will be happy to introduce you to the existing team leader or tour the site with you for an experience that fits your interests. We have sun, shade, shrubs, perennials, annuals and more. All are great learning experiences with support from TGAC and experienced members. All areas are in need of more team members!

Plant Sale divisions - We get to shake off the colder temps, assess the upcoming shoots and plan for potential plant sale donations from your gardens. A recent e-mail went out including the plants wanted list. See the Nursery article for more info.

Check out the other articles in this issue for the latest news and we hope you Zoom in for the membership meeting on March 21st at 7:00 pm. In person meetings will begin in April!

Renee Cottrell, President
Tollgate Garden Volunteers

The Tollgate Farm News



how many overwintered pots may not survive... so we're hoping for lots of donations this spring to hedge our bets.

Opening day for the Nursery will be Saturday, April 13! On that date, we will have the Nursery fully prepared for you to easily drop off your donations.... It is not necessary to pot your donations – but it is critical that the roots are covered with soil in some type of container. We ask that you provide plant identification (botanical, common name, bloom color, cultivar – as much as you know).



Please store donations at home until the nursery is open!.. if you are unable to keep donations at home, please contact me to make special arrangements for

early drop off (palmermargaretanne@gmail.com).

ACCURATE PLANT IDENTIFICATION IS REALLY HELPFUL! Ideally, we prefer to have both the Botanical and Common name, cultivar (if relevant) and bloom color. We also understand that this information is not always known – so PLEASE provide what you do know! **PLEASE, NEVER LEAVE DONATED PLANTS IN THE NURSERY WITHOUT CLEAR IDENTIFICATION!**

Are you interested in learning more about volunteering in the Nursery at Tollgate? It provides an opportunity to learn about lots of different plants, as well how to maintain healthy perennials in a pot, while working to benefit all the Tollgate Gardens. Contact me for more information at palmermargaretanne@gmail.com.

Left side and top right side photos provided by Peg Palmer
Bottom right side photo by Mary Bohner

Finally, it's March! It's been feeling quite spring like... so is winter over, or will we have another round of cold and snow before spring is really here? I'm ready to get out in the garden!



The Nursery Team has been in SPRING PLANNING mode for a while!

That means starting our preparation for the **SPRING PLANT SALE**. The most important thing for a

successful sale – other than great weather that we can't control – is to have a Nursery filled with a wide variety of healthy, vigorous plants to sell.

The **PLANTS WANTED** list has been published - hopefully this helps you to identify some plants that you may have in your gardens that you can divide and share with the Nursery. This list includes about 300 garden perennials that we have traditionally stocked and sold, including both the botanical (latin) and common name. As you get out in your gardens in the coming weeks, keep the Nursery in mind as you clean up, move, and divide plants.



We rely on donations from Tollgate Garden Volunteers to stock the Nursery and generate financial support for all Tollgate Gardens.

We went into the

winter with the Nursery well stocked, but we may have higher than normal winter losses this year. The wide temperature fluctuations we've experienced expose plant roots to a constant freeze/thaw cycle, holding moisture from rain and snow melt in the pot. We won't know for some time

The Tollgate Farm News



“A wet spring, a dry harvest. On St. Patrick’s Day, the warm side of a stone turns up, and the broad-back goose begins to lay. March comes in with adders’ heads and goes out with peacocks’ tails. Thunder in spring, Cold will bring. So many mists in March you see, so many frosts in May will be. In beginning or in end, March its gifts will send.”

A piece of folklore that resonates. The March equinox occurs on Tuesday, March 19. In the Northern Hemisphere, this is known as the vernal, or spring, equinox and marks the start of the spring season. However, in Michigan winter tends to hold on or pop up when you think it is finally over, so we proceed with caution into spring ever ready for inclement weather.

The expression “March comes in like a Lion and goes out like a Lamb” seems to have started by first relating to the heavenly stars above. It is believed that this saying has more to do with the month beginning with the constellation Leo (the lion) which rises in the east to start March and ends the month with the constellation Aries (the ram, or lamb) setting in the west. Most believe the saying more appropriately is due to March being a month in which you can experience a lion’s roar of frigid cold and biting winds, as well as a playful lamb’s bleat of gentle breezes and warm sunshine.



March also means preparing the greenhouse for starting transplants for the PAR Garden, Edu Garden, and the CSA (Community Supported Agriculture). We will be partnering with the CSA and Edu Garden teams in this effort, sharing watering, thinning, and hardening of the transplants.



PAR Report continued on Page 7

The Tollgate Farm News

PAR Report continued from Page 6

After Maplefest, the greenhouse will be equipped with tables, various sized flats for a variety of vegetables, seed starter medium, and labels. The watering system, heat, and ventilation will be readied for startup in April. There will be directions and sign-in sheets to help direct and coordinate this activity.



We hope to start the garden renovations as early as the weather permits (hopefully more lamb and less

lion), even intermittently, if possible, this month. At a minimum, we can remove the black plastic covers and any rotten wood around the boarded beds, as well as remove the old irrigation and prepare the new. The latter will entail cutting seventy-five 3' lines and twenty-five 4' header hoses with couplers and spigots for three lines for each bed. The main hoses between the beds will be cut when the beds have been fully renovated. Next, the hard work begins with measuring and adjusting each bed to a 30' x 4' footprint with 2' mulched pathways in between beds. This effort will proceed based on the stamina of our volunteers and will hopefully be completed in time for planting to begin in May.



We have decided to downsize the garden space from 35 to 26 beds this year. The south nine beds will be

returned to the farm to be used as additional leased plots. The bed with garlic (current #24) will remain intact until we harvest in the

summer. So, we are back to 26 beds total, with a different configuration - the entire row on the north side. I will be updating the bed numbers and planting charts accordingly. This along with the renovation should alleviate some of the more challenging work tasks and get us back to a more manageable work effort, as well as a beautiful garden space for all to enjoy.

I am thrilled to be joined by a long time PAR Garden volunteer, Wanda Morrison, in a new role – co-AGL (Area Garden Leader). We will be working closely to support our wonderful volunteers and another bountiful year in the PAR Garden, as well as to welcome new volunteers who are interested in joining our fantastic team and providing such a valuable service to the community. All volunteers, whether Extension Master Gardeners, avid gardeners, or individuals interested in gardening and community service, regardless of experience level, are welcome to join the team once cleared through the MSU Volunteer Selection Process. We have an enthusiastic, fun, hard-working team, and plenty of rewarding opportunities to help those in need. Come check us out.

If you would like to learn more about volunteering at MSU Tollgate Farm, please contact Roy Prentice (prentic1@msu.edu, 248-347-3860 x251) or Carmen Hamilton (hamil466@msu.edu, 248-347-3860 x239) for more information.

Hope to see you in the garden this year or perhaps in the greenhouse in the spring,

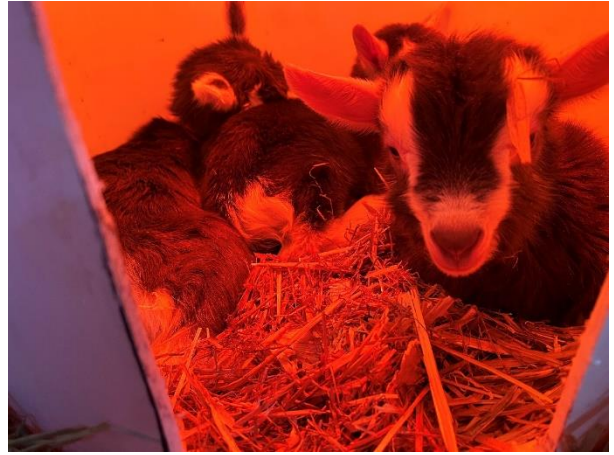
Kathryn Fitzpatrick

Photos on Pages 6 & 7 provided by Kathryn Fitzpatrick

The Tollgate Farm News

Goat Kids Arrive on the Farm!!

There are lots of new faces at Tollgate. Over the last few weeks, 12 new goat kids have arrived. They are cute as the dickens and so happy to be in this world!



Top left photo provided by Roy Prentice
All other photos by Jason Skonieczny

The Tollgate Farm News

NOTE: Member Spotlight will return with 2024 Activity Days

Welcome New Tollgate Garden Volunteer Members

We are glad you are with us! Please feel free to contact Renee Cottrell with any questions on our planned activities and schedules for 2024. You may email your questions about the gardens and volunteering at rmcottrell4@att.net. This is a wonderful place, full of educational opportunities, with personal satisfaction and social connections as reward for volunteering. Our membership holds a large amount of collective knowledge and expertise that is willingly shared with a strong team approach to make every effort to direct new members to areas of most interest on the site. We want to guide you to a great experience with the Tollgate Garden Volunteers. Check out these links to start exploring your garden opportunities:

Garden Orientation PDF

<https://www.canr.msu.edu/tollgate/uploads/Tollgate%20Garden%20Volunteer%20orientation%202024.pdf>

Tollgate web pages for the Gardens

<https://www.canr.msu.edu/tollgate/gardens/>

2024 Tollgate Garden Volunteer Activity Calendar

<https://www.canr.msu.edu/tollgate/uploads/tollgate%20activity%20cal%20draftFeb%20Final%20release%20Draft.pdf>

Other volunteer info at Tollgate

<https://www.canr.msu.edu/tollgate/volunteering/>



Photo provided by Roy Prentice

The Tollgate Farm News

Membership Update March 2024

It's almost spring!

*Let's get ready to put our garden gloves on
and return to our
beautiful Tollgate gardens!*

Thank you to everyone who has renewed their membership.

*For those of you who haven't yet done so,
please take a moment to complete the renewal form
(at the back of this newsletter) and return.*

*Tollgate could not be the beautiful community that it is
without all your/our efforts.*

*If you have any questions about membership,
please do not hesitate to contact me.*

Teresa LaRosa
tlrrehab@gmail.com



The Tollgate Farm News

Tollgate Garden Volunteer Membership Levels

When you renew your TGV membership each year, we ask you to designate your status as an ACTIVE member or a SUPPORTING member. As a reminder, these designations mean the following:

ACTIVE MEMBER: Volunteer in the gardens on workdays or individual assignments, volunteer at events and projects on the site, receive all communication and participate in monthly meetings.

- All active volunteers must go through the MSU Volunteer Selection Process (VSP) screening to work on site and maintain their VSP status yearly or as required by MSU volunteer selection procedure policy.
- Extension Master Gardeners (EMG) are screened through the VSP process either at the start of the program when you take the EMG class or when you renew your EMG certification/VSP update each year or as required by MSUE. If you are an active/current EMG and choose to volunteer at Tollgate your VSP status is complete.
- Previously certified EMGs who decide to let their certification lapse can still volunteer on the site, but still must go through the VSP screening requirement as above. We have onsite personnel who can help you complete the process.
- If you are an active MSU volunteer through another program on site and have maintained an active VSP status, then your VSP status is complete
- Individuals who have not gone through the VSP screening, will need to pursue the VSP screening before they can be an active volunteer at Tollgate (or at any MSU site or program). We have onsite personnel who can help you complete this process.
- Note that once an individual has participated in the initial VSP screening, they need only approve a background check in subsequent years. No need to obtain references and other activities that are required with the initial VSP screening.

SUPPORTING MEMBER: Support the volunteers and participate in monthly meetings and general activities.

- Notified regarding monthly membership meetings.
- Informed about Tollgate events via the Farm News newsletter and other informative e-mail notifications.
- Supporter status will **not** allow you to participate as a volunteer in the garden maintenance activities, maple syrup project or any MSU Extension events on site.
- Return to an "ACTIVE" status at any time by completing the VSP screening process.

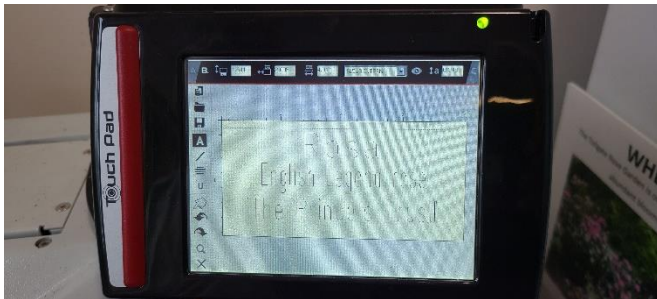
A donation is NOT required to renew your membership. All donations are greatly appreciated and go into our account to maintain the gardens.

The Tollgate Farm News

Attention Area Garden Leaders

Garden Plant Label Project 2024 - Update

Seems like springtime is here (though it may pause from time to time over the next month or two) and we're all eager to get gardening. Linda Piasecki and I (with Roy's help setting up the engraver) have made labels for AGLs who submitted requests. They will need to be assembled on stakes before you can place them in your gardens. We may have a special workday (or a rainy Saturday if that's in the future) for you to assemble them. If you add new plants to your garden this year, please keep all information for future label-making,



2024 Garden Budgets

Many of you have already submitted your 2024 Garden Budget Planners. Thank you! If you haven't yet done so, please **submit them to me by April 1**, if at all possible. The correct form is attached at the back of this newsletter.

Last Saturday, major pruning of trees and shrubs was accomplished in several gardens. Thank you to all who helped. It was nice to once again share a hot dog lunch and conversation. I look forward to seeing all of you as our season progresses.

Marilyn Alimpich

Photos provided by Linda Piasecki

The Tollgate Farm News

HELLEBORES IN BLOOM



Photo provided by Lori Heiden

The Tollgate Farm News

PEEKING THROUGH THE STRAW IN PAR



Photos provided by Kathryn Fitzpatrick

The Tollgate Farm News

SATURDAY WORKDAY 3/16



Photos provided by Nancy Powell

The Tollgate Farm News

FUN AT MAPLE FEST



Photos provided by Karen Harris

The Tollgate Farm News

FRIENDS IN THE FIELD



Photos provided by Karen Harris

The Tollgate Farm News

PRUNING IN THE FARMHOUSE GARDEN (Note the cool new pruning tool!!)



Top left photo provided by Kathy Johnson
Top right and bottom photos by Julie Semroc

The Tollgate Farm News



Garden quotes submitted by Nancy Powell

The Tollgate Farm News

Take a Tollgate Picture

Next time you are volunteering at Tollgate, consider taking some pictures for the Tollgate Calendar. The preferred format is jpeg, landscape files. **It is important to send high-resolution photo files at full or actual size.** Send photo files in separate emails, if necessary, to Judy Warren, Tollgate Calendar Editor at TGFarmPhotos@gmail.com.

Photos are also appreciated for the monthly Farm News. Photo files can be sent to napowell77@gmail.com.

Every season is magical at Tollgate. Think about capturing that magic in a photo for the Tollgate Calendar or Farm News.



Top left photo provided by Dave Komraus
Bottom left, top, and bottom right photos by Roy Prentice
Middle right photo by Norm Powell

Tollgate Volunteer Information

Activity Days: January - October

- Activity Day hours are 9:00 am – Noon, unless otherwise noted on the Activities section of the first page of the newsletter and the full year calendar (2024 version will be available in February).
- Lunch will be provided on scheduled workdays.
- Active members will continue to get email reminders of these activities.

NEW: We strongly recommend you bring your own tools for your garden activities. All tools borrowed from the Toolshed should be cleaned and sanitized with the wipes provided, prior to returning the items to the Toolshed after use.

TIP: If you aren't getting **The Tollgate Farm News** email, check your SPAM folder

Volunteer Activity Day and Meeting information will be communicated by email

Garden Tools Available for Use at Tollgate

Spades	Leaf Rakes
Garden Rakes	Garden Hoe
Brooms	Long-Handled Garden Forks
Wheelbarrows	Weed Buckets

Suggested Gardening Implements to Bring from Home as Needed

Trowel	Plant Division Forks
Pruners	Shrub Rake
Loppers	Sunscreen/Insect Repellent
Garden Scissors	Garden Gloves
Hand Saw	Knee Pads
Weeding Implement	

Tollgate Garden Advisory Committee (TGAC)

Farm Manager – Roy Prentice

248-347-3860 Ext.251 prentic1@msu.edu

- President**..... Renee Cottrell
- Vice President** Marilyn Alimpich
- Secretary**..... Theresa Bridenbaugh
- Treasurer**..... Karen Harris
- Membership & Hospitality** Teresa LaRosa
- Communications** Kathy Johnson
- Programs**..... Jackie Stengel
- Farm News Editor** Nancy Powell
- Event Coordinator**.....Lori Heiden

- The TGAC meets monthly virtually on Zoom (until further notice) on **the first Tuesday of the month at 7:00 PM**. All Tollgate Garden Volunteer members are welcome to attend and should contact Roy Prentice for meeting link.
- Contact information for individual TGAC members and Area Garden Leaders (AGL) are available by contacting Roy Prentice to have message or contact forwarded for response. Contact info can also be found in the Garden Binders in the Volunteer Communication Center.
- Tollgate Volunteer Membership is renewed annually. The 2024 Tollgate Garden Volunteer membership is valid from **January 1, 2024 to December 31, 2024**.

For membership questions or to update your current membership information, email tlrrehab@gmail.com

For general information and questions, contact Roy Prentice or see Website: <http://tollgate.msu.edu/volunteering/>

MSU Tollgate Farm and Education Center



28115 Meadowbrook
Novi, MI, 48377-3128
tollgate.msu.edu
Contact Roy Prentice:
248-347-3860 ext. 251

**MSU Tollgate Garden Volunteers
Activity Calendar-2024**

January	February	March
2-TGAC 7:00 PM 18-TGV General Meeting 7:00PM via Zoom 20-AGL Planning Meeting 10:00AM 	6-TGAC Meeting 7:00 PM 15-TGV General Meeting 7:00 PM via Zoom 	5-TGAC Meeting 7:00 PM 21-TGV General Meeting 7:00 PM via Zoom <u>Activity Days</u> 2-Pruning 9:00AM 9/10-Maplefest no work day 16-Grass Cut Back-all 9:00AM 23-Pathway/demo mulching 9:00AM 30-Multi-garden/Easter wk 9:00AM
April	May	June
2-TGAC Meeting 7:00 PM 18-TGV General Meeting 7:00 PM  <u>Activity Days</u> 6-Rose/Pond 9:00AM 13-Demo 9:00AM 20-Office/Heritage/Rain 9:00AM 27- Children's/Xeriscape 9:00AM New volunteer orientation 9:00AM Pancake Brunch 12:00PM	7-TGAC Meeting 7:00 PM 16-TGV General Meeting 7:00 PM  <u>Activity Days</u> 4-Entrance/Nursery-plant divi 9:00AM 11-Farmhouse 9:00AM 18- Shade/Hosta 9:00AM 25-Memorial Weekend Rockledge/planting 9:00AM	4-TGAC Meeting 7:00 PM 20-TGV General Meeting 7:00 PM  <u>Activity Days</u> 1-Spring Plant Sale 9am-2pm 8-Rose/Entrance 9:00AM 15-Office/Heritage/ Rain 9:00AM 22-Pond/12Mile 9:00AM 29-Demo 9:00AM
July	August	September
2-TGAC Meeting 7:00 PM  <u>Activity Days</u> 6- Farmhouse/Rose 9:00AM 13-Children's/Xeriscape 9:00AM 18-TGV Garden Open House 6-8:30PM (Thursday-no mtg)19th rain date 20-Hosta/Shade 9:00AM 27-Heritage/Office 9:00AM	6-TGAC Meeting 7:00 PM 7-Rose Garden Dedication 5:00 PM 15-TGV General Meeting 7:00 PM  <u>Activity Days</u> 3-Entrance/Rain 9:00AM 10-Pond/12 Mile 9:00AM 17-Demo 9:00AM 24-Nursery/plant division 9:00AM 31-Labor Day Weekend Rockledge, divisions 9:00AM	3-TGAC Meeting 7:00 PM 19-TGV General Meeting 7:00 PM  <u>Activity Days</u> 7-Shade/Hosta 9:00AM 14- Farmhouse/Rose 9:00AM 21-Nursery Fall Plant Sale 9:00-12:00 28-Xeriscape/Children's 9:00AM
October	November	December
1-TGAC Meeting 7:00 PM 17-TGV General Meeting 7:00 PM <u>Activity Days</u> 5/6-Pumpkinfest no workday 12-Nursery Clean up 9:00AM 19-Pond clean up 9:00AM 26-Fall Clean up 9:00AM	2-Recognition Dinner 4:00PM 5-TGAC Meeting 7:00PM <u>Activity Day</u> 9-Rose winterizing 10:00AM 28-Thanksgiving 	3-TGAC Meeting 7:00 PM 25-Hanukkah 25-Christmas 26-Kwanza   

****All activity days, UNLESS OTHERWISE NOTED, begin at 9 am and are subject to change. Please consult the newsletter or call 248 347-3860 ext 251 or look for e-mails for updated information.**

Visit on web: www.tollgate.msu.edu

MSU TOLLGATE VOLUNTEER SIGN IN

LOGGING YOUR VOLUNTEER HOURS HELPS US TELL TOLLGATE'S STORY TO THE MSU COMMUNITY

- USING THE CAMERA ON YOUR SMART PHONE, HOVER OVER THE QR CODE
- A LINK WILL APPEAR
- IF NO LINK APPEARS, YOU WILL HAVE TO DOWNLOAD A QR READER APP
- CLICK ON THE LINK TO THE GOOGLE SIGN IN PAGE
- COMPLETE WITH YOUR INFORMATION
- THIS SIGN-IN PROCEDURE DOES **NOT** LOG YOUR HOURS WITH MSU EXTENSION



NOTE: If you prefer to complete your sign-in on your computer, this link will take you to the site:
[Tollgate Volunteer Sign In 2024](#)

MSU Tollgate gets a lot of credit for all the wonderful volunteers that tend the gardens, make maple syrup, and support programming. The farm would not be the unique place that it is without the support of many willing hands. Traditionally, Tollgate has relied on a sign-in sheet in the volunteer center to capture the hours of volunteer service. Many of our volunteers who work in the maple project or distant gardens may not visit the volunteer center when they are on the farm. To capture all of our volunteer hours, we are trying a new recording system. By following the instructions below and scanning the QR code, you can record your Tollgate hours online from anywhere. After you have scanned the code, you can even bookmark the link so that you can access the hours reporting form without the code.

Thank you for making Tollgate such a wonderful place! Roy

GARDEN PROJECT/BUDGET PLANNER

Admin Use Only

Date received:
Date approved
Sent to Treasurer _____
AGL Notified _____
Revision requested Y N
Amount approved

Plan Date:
Garden Name:
AGL/Co-AGL contact info :

Describe any special work projects to be done in garden this season that may require extra assistance or equipment. (such as larger scale planting, pruning, divisions, special projects: (OK if "none" are planned)

- 1.
2.
3.
4.

List plants that can be divided for plant sale. SPRING FALL

- 1.
2.
3.
4.
5.

Proposed new/replacement Plants for Garden	Plan (purchase, division, donation)	Estimated Cost
	Total	\$

Submit additional pages if needed

Other Items Needed for the Garden	Plan	Estimated Cost
	Total	

Submit additional pages if needed



MSU Tollgate Garden Volunteers Membership Form

Please legibly print all entries. Thank you.

2024

Name _____

Date Submitted _____

Address _____

Telephone Number

City _____ MI

Day _____ - _____

Zip _____ - _____

Evening _____ - _____

Email _____

Name you would like on badge, **ONLY IF NEEDED**

Choose one only (please do not leave blank):

Supporting member: I wish to support the volunteers and participate in monthly meetings but will **not** be participating *as a volunteer* in garden activities, projects or other events on the site.

Active member: I plan to participate *as a volunteer* in meetings, garden activities and/or other events or projects on the site and have or will complete the required Volunteer Selection Process.

Were you a Tollgate volunteer member last year? Yes () No ()

Are you interested in serving on a committee or garden project? Yes () No ()

If yes, please note below if you have a particular area of interest, skills to share.

A donation in support of the Tollgate Volunteer organization would be greatly appreciated (\$20 suggested). If you would like the newsletter mailed to you rather than emailed, please include an additional \$10 to cover postage.

Check here to have the newsletter mailed to you. _____

Make checks payable to: **Michigan State University**

Return to: **Tollgate Gardens Volunteer Office**
28115 Meadowbrook
Novi, MI 48377-3128

Questions: **Phone: 248-347-3860 Ext. 251**

Email: tlrrehab@gmail.com

2024 Membership is from January 1, 2024 to December 31, 2024

Please read this Privacy Policy:

By filling out and submitting this form you authorize the Tollgate Garden Volunteers (TGV) and MSU to use your contact information to communicate with you via email, newsletters and other formats. If you wish your email and other identification information to not be used by the TGV and MSU, please check this box (). (By checking this box you will not receive email notification of workdays, or other volunteer opportunities, special events and educational opportunities, or the availability of the newsletter via e-mail).

In the event of an emergency please notify:

NAME: _____ **PHONE:** _____